

Technical Data

Fluke VT06 & VT08 Visual IR thermometer

New Palm-size Imager, Light and Clear



- Wide range of -20 °C - 400 °C
- 2 hours fast charging time, 8 hours battery life
- Single-level menu interface, Open-and-View
- Quickly locate the target under test with laser pointer (except JP models)
- Auto high/low temperature capture

Higher resolution, greatly improving temperature measurement efficiency

The 120 x 90 resolution model has more than 10000 infrared pixels, which is 12 times higher than the previous generation* and rich temperature details help you find problems faster.

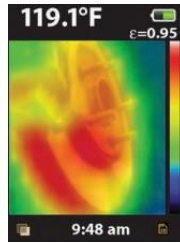


Image from the previous generation product VT04* (28x28 pixel)

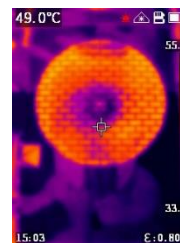


Image from VT08 (120x90 pixel)

Difficult to distinguish between false and real? Infrared and visible blending can help!

VT08 is equipped with both infrared and visible light cameras and blend a visual image with infrared heat map overlay in real-time to distinguish the object. In addition, you can quickly adjust the blend degree according to your habits, or switch to the Picture-in-Picture mode.



Experience of thermal imagers in the size of a spot thermometer

Portability is one of the advantages of VT06 / 08 thermal imager. It is almost comparable to the point thermometer in terms of weight and size. Great abilities with a small size, you can get a leap in temperature measurement experience from point to area.



Drop-proof, dust and water resistance, suitable for harsh industrial environments

Built with legendary Fluke ruggedness, VT06/08 features IP65 ingress protection and 2-meter drop test. It can provide stable and reliable test results even if it is exposed to the sun and rain, or it is dropped.



	VT08	VT06
Thermal image and optics		
Infrared resolution	120×90	
IR frequency band	7.5~14 μm (long wave)	
Frame rate	9Hz	
Thermal sensitivity/NETD	< 60 mk	
Field of view (H x V)	50° x 37.5°	
Spatial resolution	7.6 mrad	
Focus system	Focus free	
Minimum focusing distance	0.5 m (19.7 in)	
Image display and storage		
Image mode	Thermal image Visible image PIP	Thermal image
Palettes	Ironbow, Blue-Red, High-Contrast, Amber, Hot Metal, Grayscale	
Internal storage	> 28GB (>100000 images) *14GB Internal Storage for VT06/VT08 manufactured before 6 Aug 2022	
File format	JPEG compression format (.jpg)	
PIP mode	Yes	No
Temperature measurement		
Temperature range	-20 °C to 400 °C [-4 °F to 752 °F] (not specified for below -10 °C)	
Temperature accuracy	±2°C or 2% @ 23°C±5°C, whichever is greater	
Emissivity	Adjustable	
Background temperature compensation	Yes	
Auto high-/low-temperature capture	Yes	
Center point temperature	Yes	
Alarm	Maximum/minimum temperature alarm in full screen	
Interface and lens		
Visible lens	Yes	No
Flashlight	Yes	No
Laser sighting	Yes (except JP models)	
Type-C interface	Yes	
Tripod interface	Yes	
Power system		
Battery type	Rechargeable Li-ion battery, unremovable	
Battery operation time	≥5 hrs (VT08) ≥8 hrs (VT06) Actual battery life depends on environment and settings	
Charging Time	< 2.5 hrs to full	
Battery charging temperature	0 °C to 50 °C	
Battery charging system	Charge in the machine (the battery is not removable)	
AC adapter	Include power supply, universal adapter Output: 5 VDC, 2 A	
Power saving mode	Yes	

	VT08	VT06
Environmental specifications		
Operating temperature	-10 °C to 50 °C	
Operating altitude	2000 m (1.24 mi)	
Storage altitude	12 000 m (7.5 mi)	
Others		
Warranty	1 year	
Standard accessories	Wrist strap, quick reference guide, charger + adapter, Type-C data cable, data-downloading card	
Display	6.096 cm (2.4-inch) LCD	
Language	Simplified Chinese, Traditional Chinese, Japanese, Korean	
Size	20.4 cm x 6.6 cm x 7.6 cm	
Weight	0.36 kg	0.35 kg
Relative humidity	≤90%, non-condensing	
Safety		
Safety standards	IEC 61010-1: Pollution Degree 2	
Laser	IEC 60825-1: Class 2, 650 nm, <1 mW	
Battery	IEC 62133-2, UN 38.3	
Protection class	IEC 60529: IP65 (with Type-C port closed)	
Drop test	2 m	
Electromagnetic Compatibility (EMC)		
International	IEC 61326-1: Industrial Electromagnetic Environment CISPR 11: Group 1, Class A	
Korea (KCC)	Class A Equipment	
America (FCC)	47 CFR 15 subpart B.	

Ordering Information

5313580	Fluke-VT06/TW-KOR
5313598	Fluke-VT08/TW-KOR
5318031	Fluke-VT06/JP
5318046	Fluke-VT08/JP

Standard accessories

Wrist strap for main unit
Quick reference guide
Charger + Adapter
TYPE-C data cable
Data-downloading card



Fluke. *Keeping your world
up and running.®*

Fluke Shanghai Corporation

For information call: 400-810-3435

Web access: www.fluke.com.cn

©2021 Fluke Corporation. 09/2021